



ROYAL CARIBBEAN



# LEGEND OF THE SEAS

BARCELONA & ROME • SUMMER 2026

NEW FEATURES REVEALED

AS LEGENDARY AS IT GETS

The threequel that's levelling up everything you love about Icon of the Seas. Dial up the whoas on the first Icon Class ship to hit the Med, adventuring on a ship as monumental as the destinations.

# LEGENDARY ADVENTURE. LEGENDARY FLAVOURS. LEGENDARY NIGHTS.

Introducing the new Legend of the Seas<sup>SM</sup> — the family time of a lifetime. Make a bigger splash than ever, conquering thrills like the largest waterpark at sea and the daunting Crown's Edge<sup>SM</sup>. Discover family favourites with a new spin like mini golf and enjoy revved up rest and relaxation at seven sparkling pools. Gather your crew for epic meals with a record-breaking 28 ways to dine, including new flavours at the AquaDome. And bedtime will just have to wait with a new, mind-blowing Broadway show, captivating entertainment, live music and bar-raising lounges everywhere you look. It all begins in the Mediterranean from July 2026, this is as legendary as it gets.



Roald Dahl's Charlie and the Chocolate Factory



Family Ocean View Balcony Room

## NEW YOU'VE GOT THE GOLDEN TICKET

Grab your Golden Ticket — Roald Dahl's Charlie and the Chocolate Factory\* brings a whimsical, wondrous world to life in the Royal Theatre. This hit Broadway musical steps right into scrumdiddlyumptious scenery, coming alive with pure imagination. Oompa Loompas will dance and dazzle. Golden Ticket winners will meet mystifying fates. And Willy Wonka himself takes you through a world of colourful confections beyond anything you've ever imagined. Tune in to a show for the ages as this magically mind-bending spectacle makes its grand debut at sea, only on Legend of the Seas.

## NEW LEGENDARY STAYS

Bolder bonding goes even bigger on Legend of the Seas<sup>SM</sup>, with more rooms for maxed-out family time than ever before. Escape in the incredible Family Ocean View Balcony rooms — with special bunk beds carved out just for kids — choosing between traditional balconies for outdoor zen and infinite balconies adaptable for all types of adventures.

## ONBOARD FEATURES

### NEW BIG BOLD BITES

Hungry for adventure? Legend of the Seas dishes up a mouthwatering lineup of 28 dining hotspots — the most at sea. Savor each second of family time with delicious sit-down dinners and immersive dining experiences — including an all-new culinary quest at Royal Railway – Legend Station. Toast every milestone moment, from birthdays to anniversaries and beyond at celebration-worthy venues, like the VIP-approved Celebration Table. And feast around the world at Windjammer — one of many must-visit eateries serving 24 global cuisines. This is As Big As Vacation Gets — so take a bite out of your most delicious getaway ever.

### NEW EVERYTHING TASTES BETTER TOGETHER

Family time tastes better than ever onboard Legend of the Seas, where mouthwatering meals delight every appetite. Go on a one-of-a-kind culinary quest with your crew along the ancient Silk Routes at the immersive Royal Railway – Legend Station. Gather your gang for California coastal cuisine at Pier 7®. Bond over three-course family favorites in the Dining Room, plus enjoy delicious hand-tossed pizzas, massive meatballs and more at Giovanni's Italian Kitchen & Wine Bar. Bring your loved ones — and your appetite — for meals that turn "mmm" into memories you'll savor for years to come.

### NEW ALL DAY EATS

Nothing works up an appetite quite like all-out adventure — so grab a bite from the casual food spots open all day long and get back to vacation mode. Fill up on classic faves for kids and kids-at-heart at Surfside Eatery or pop by Windjammer for a globe-trotting buffet of international flavors. Snag sandwiches, salads, sweet treats and sweeping ocean views at Pearl Cafe. And don't miss the Royal Kümmelweck roast beef sandwich from Park Café, serving delicious deli classics right in the heart of Central Park®. No matter your plans, these flavors are perfectly crafted to fit your schedule.



\*Roald Dahl's Charlie and the Chocolate Factory. Book by David Greid, Music by Marc Shaiman, Lyrics by Scott Wittman and Marc Shaiman. Based on the novel by Roald Dahl. Songs from the Motion Picture by Leslie Bricusse and Anthony Newley. Roald Dahl's Charlie and the Chocolate Factory is presented through special arrangement with Music Theatre International (MTI), [www.mtishows.com](http://www.mtishows.com)



## ONBOARD FEATURES

### THE THRILLING THREEQUEL

Legend of the Seas is the next chapter in larger-than-life adventure you can only find on an Icon Class ship. It's bonding at the largest waterpark at sea on six record-breaking slides. Braving the Crown's Edge, an all out aerial test of courage. Conquering fleet favourites — from hanging ten on FlowRider to fun by the gallon for kids at Splashaway Bay.



### AMP UP YOUR WIND DOWN

Icon level chill keeps getting cooler, and with seven sun-soaked pools and ten totally zen whirlpools, there's an oasis for every mood. Play all day in Royal Bay, the largest pool at sea, or score more family time at Water's Edge pool in Surfside. Drink in wow-worthy views from the suspended infinity pool at the adults-only Hideaway, grab a tropical cocktail from Swim & Tonic, or up the scale on upscale in the exclusive Grove Suite Sun Deck pool.



### LEGEND TAKES THE STAGE

Explore live music from across the sonic spectrum, crowd-pleasing dueling pianos, soulful jazz tributes, high-octane rock concerts, mellow acoustic jams, lively Latin bands, and everything in between. One-of-a-kind shows take the stage at high-tech venues designed for maximum wows, from the 55-foot-tall waterfall in the AquaTheater to bold Broadway-style theatre.

## ONBOARD FEATURES

### A FOODIE'S PARADISE

Take your tastebuds on a global tour, from savoury Japanese street food and theatrical hibachi bites to American delights and Italian delicacies. Step into sophisticated style at the newest twist on an old-school, high-end supper club — where every course is perfectly paired with signature cocktails and set to a soundtrack of live, sultry jazz. Find favourites for the whole family, with comfort foods bfor the kids and curious cuisine for adventurous appetites.



### STAY TIME IS PLAY TIME

The world's best family holiday comes with plenty of room to stretch in style and Legend of the Seas stacks up more rooms for families that any ship in the fleet. Get the space you need for the adventure you crave, with room for everyone in your crew. From levelling all the way up with a legendary stay in the Ultimate Family Townhouse. To escaping in the incredible Infinite Family Ocean View Balcony rooms, adaptable for all types of adventures. Or relaxing in a Surfside Family Suite, smartly designed for everyone and conveniently placed in the heart of the action.



### LEGENDARY LUXURY LIVING

Legend of the Seas delivers luxury that's anything but boring, with an entire neighbourhood dedicated to exclusive amenities. Choose from ten room styles that make how you stay just as memorable as how you play onboard. Infinite Grand Suites expand on-demand, converting your larger living room into a breezy balcony oasis at the push of a button. Sunset Suites offer unforgettable views of endless blue. It doesn't get more luxe than the multi-storey Royal Loft, Icon Lofts. And just steps from your room, unwind at The Grove Sundeck, with a pool and two mouthwatering restaurants exclusively for Sky and Star tier suite guests.



# LEGEND OF THE SEAS

8 FABULOUS  
NEIGHBOURHOODS TO ENJOY



## AQUADOME

Introducing the coolest innovations at sea. Watch ice skaters dazzle with double axels at our biggest ice arena ever. Or marvel at performances that push the bounds of bravery beneath a mesmerizing, morphing waterfall. And that's just the beginning.

## CENTRAL PARK

Legend of the Seas features an expanded and enhanced Central Park, a vibrant, open-air neighborhood with over 33,500 live plants, bars, restaurants with outdoor seating, live music venues, and unique "infinite balconies" with colourful shutters overlooking the park.



## THE PROMENADE

A grander Royal Promenade features its first floor-to-ceiling ocean views, plus more than 15 restaurants, cafes, bars and lounges.

## CHILL ISLAND

From upbeat party scenes to family-friendly hangs and restful retreats— there is a pool for every mood. With seven pools, nine whirlpools and sweeping ocean views all around — you'll always feel connected to the sea.



# LEGEND OF THE SEAS

8 FABULOUS  
NEIGHBOURHOODS TO ENJOY



## THE SUITE NEIGHBOURHOOD

The Suite Neighbourhood is three decks of luxury, offering a multilevel suite sun deck – The Grove – that has a private pool, whirlpool and dining, and a two-storey Coastal Kitchen.

## THE HIDEAWAY

Floating in mid-air eight storeys up, the first suspended infinity pool at sea brings beach club vibes to the back of the ship at this adults-only paradise. Spend the day sipping bubbly champagne cocktails while the DJ spins relaxing beach beats until after the sun goes down.



## THRILL ISLAND

Over the top thrill await the most daring holiday makers. From record-breaking waterslides to a dangling feat high above the ocean's waves, there are plenty of ways to put your bravery to the test.

## SURFSIDE

Make the most of every minute together at Surfside – it's a stay-all-day neighbourhood for families. Everything you could want for your boldest day of bonding is right here, so your whole crew will never want to leave.



# 2026 ITINERARIES



**7 NIGHT**  
WESTERN MEDITERRANEAN  
4TH JULY 2026

**DEPARTURE/ARRIVAL PORT:**  
Rome (Civitavecchia), Italy

**PORTS OF CALL:**  
Provence (Marseille), France | Barcelona, Spain  
Palma De Mallorca, Spain | Florence/Pisa (La Spezia) Italy

**7 NIGHT**  
WESTERN MEDITERRANEAN  
11TH JULY 2026

**DEPARTURE/ARRIVAL PORT:**  
Rome (Civitavecchia), Italy

**PORTS OF CALL:**  
Naples, Italy | Barcelona, Spain  
Palma De Mallorca, Spain  
Provence (Marseille), France

**7 NIGHT**  
WESTERN MEDITERRANEAN  
18TH JULY 2026

**DEPARTURE/ARRIVAL PORT:**  
Rome (Civitavecchia), Italy

**PORTS OF CALL:**  
Naples, Italy | Provence (Marseille), France  
Palma De Mallorca, Spain | Barcelona, Spain



**8 NIGHT**  
WESTERN MEDITERRANEAN  
25TH JULY 2026

**DEPARTURE/ARRIVAL PORT:**  
Rome (Civitavecchia), Italy | Barcelona, Spain

**PORTS OF CALL:**  
Naples, Italy | Palma De Mallorca, Spain  
Alicante, Spain | Malaga, Spain

**7 NIGHT**  
WESTERN MEDITERRANEAN  
2ND\*, 9TH\*, 16TH\*, 23RD\*, 30TH AUGUST,  
6TH, 13TH, 20TH, 27TH SEPTEMBER,  
4TH, 11TH, 18TH OCTOBER 2026

**DEPARTURE/ARRIVAL PORT:**  
Barcelona, Spain

**PORTS OF CALL:**  
Palma De Mallorca, Spain | Provence (Marseille),  
France | Rome (Civitavecchia), Italy | Naples, Italy

**7 NIGHT**  
WESTERN MEDITERRANEAN  
13TH\*, 20TH\*, 27TH AUGUST,  
3RD, 10TH, 17TH, 24TH SEPTEMBER,  
1ST, 8TH, 15TH OCTOBER 2026

**DEPARTURE/ARRIVAL PORT:**  
Rome (Civitavecchia), Italy

**PORTS OF CALL:**  
Naples, Italy | Barcelona,  
Spain | Palma De Mallorca, Spain  
Provence (Marseille), France

**3 NIGHT**  
WESTERN MEDITERRANEAN  
22ND OCTOBER 2026

**DEPARTURE/ARRIVAL PORT:**  
Rome (Civitavecchia), Italy | Barcelona, Spain

**PORTS OF CALL:**  
Naples, Italy

# LEGEND OF THE SEAS

DINING

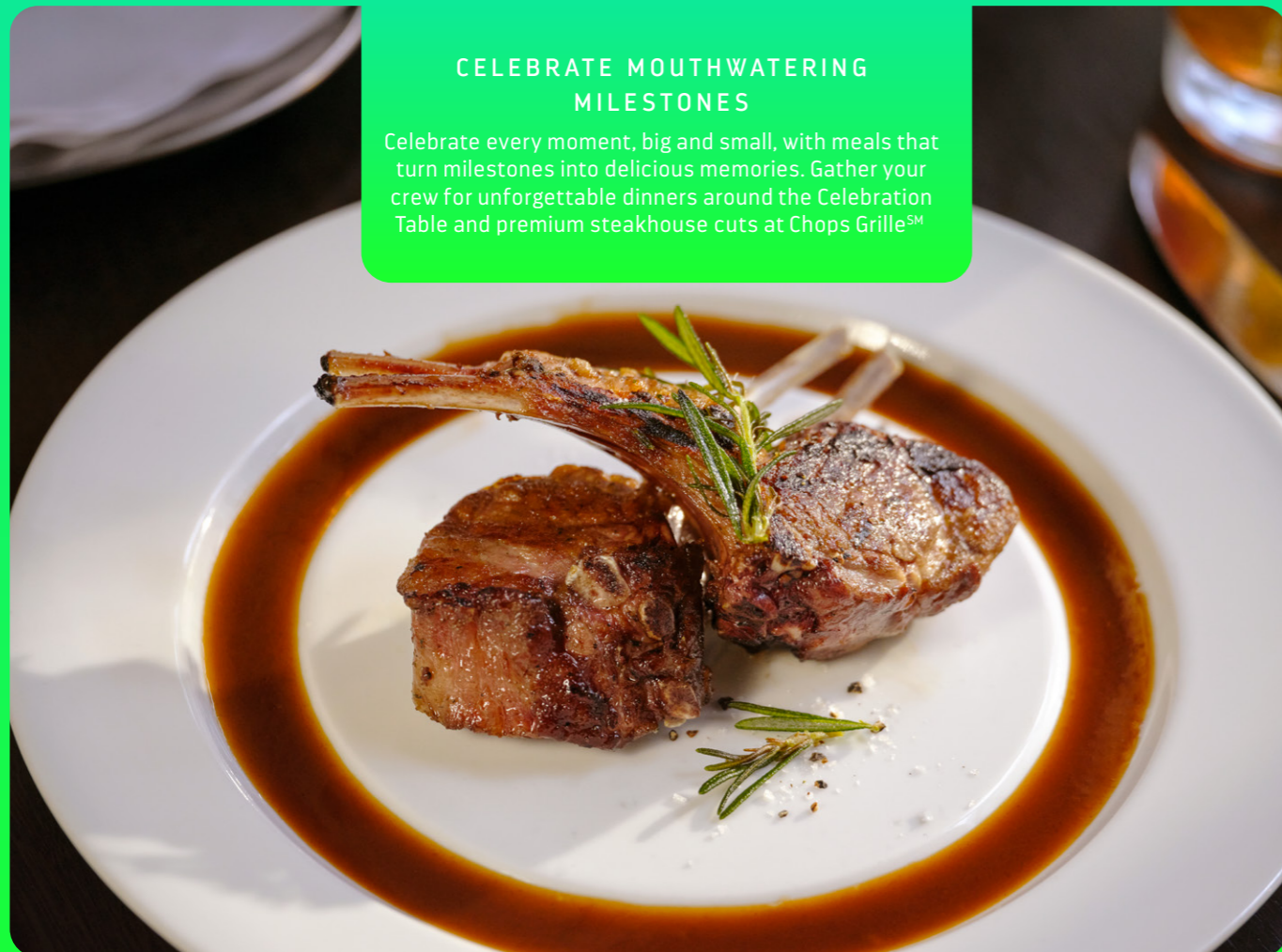


## SAVOUR THE SILK ROUTES

Pack your palate passport for a brand-new culinary quest at Royal Railway<sup>SM</sup> - Legend Station, laying tracks on an Icon Class ship for the first time.

## CELEBRATE MOUTHWATERING MILESTONES

Celebrate every moment, big and small, with meals that turn milestones into delicious memories. Gather your crew for unforgettable dinners around the Celebration Table and premium steakhouse cuts at Chops Grille<sup>SM</sup>



# LEGEND OF THE SEAS

DINING



## THE GOLDEN AGE OF GOURMET

Cue the lights — you're in for a decadent night of sultry jazz, daring cocktails, gourmet bites and glamorous sights at Hollywoodland Supper Club<sup>SM</sup>.

## A FOOD HALL FEAST

When your crew's tastes run far and wide, head to AquaDome Market — the global food hall with six unique stands, including five brand-new debuts.





ROYAL CARIBBEAN

